



**MCWANE**  
PLANT & INDUSTRIAL

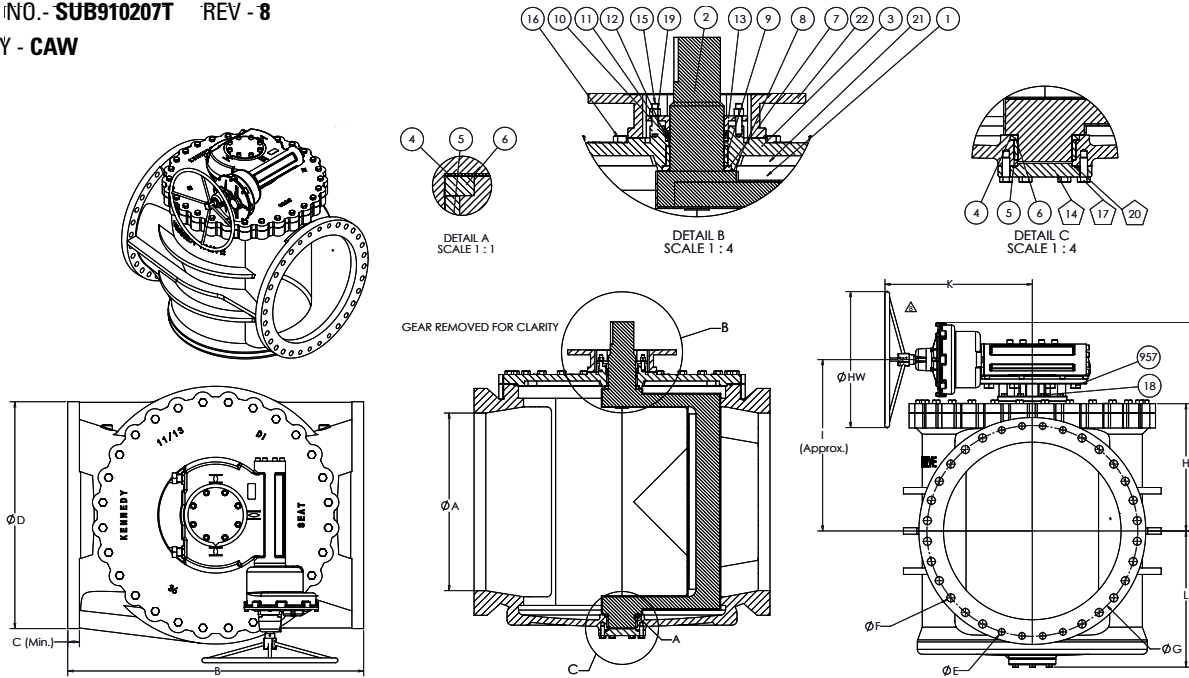


KENNEDY VALVE

# 100% FULL FLOW ECCENTRIC PLUG VALVE WITH FLANGED ENDS AND GEAR-HW SIZES 18" - 36"

DRAWING NO. - SUB910207T REV - 8

DRAWN BY - CAW



ITEM	PART NAME	ASTM DESIGNATION
1	Body	ASTM A536 65-45-12 OR 70-50-05
2	Plug	ASTM A536 65-45-12 OR 70-50-05 +NBR
3	Cover	ASTM A536 65-45-12 OR 70-50-05
4	Bottom Thrust Washer	PTFE
5	Bottom Bearing	Sintered Alloy SS316
6	GRT Guard Shaft Seal (Lower)	NBR
7	GRT Guard Shaft Seal (Upper)	NBR
8	Upper Thrust Washer	PTFE
9	Upper Bearing Washer	Sintered Alloy SS316
10	V2-Packing-A N6225-55	NBR
11	V2-Top-Packing-A N6225-55	NBR
12	V2-Bottom-Packing-A N6225-55	NBR
13	FP Guard (For Actuator)	ASTM A536 65-45-12 OR 70-50-05
14	Bottom Cover	ASTM A536 65-45-12 OR 70-50-05
15	Cover Studs	Stainless Steel ASTM A276.1316
16	Hexagon Cover Bolts	Stainless Steel ASTM A276.1316
17	Bottom Cover Bolts	Stainless Steel ASTM A276.1316
18	Hexagon Adapter Bolts	Stainless Steel ASTM A276.1316
19	Hex Nut	Stainless Steel ASTM A276.1316
20	O-ring - Bottom Cover	NBR
21	O-ring - Top Cover	NBR
22	FP Adapter - Close	ASTM A536 65-45-12 OR 70-50-05
49	Rotork Gear w/ HW	- - -
957	Gear Bolts	Stainless Steel ASTM A276.1316

DIMENSIONS													Weight (lbs.)	Rotork Gear	Gear Ratio	Turns to Open (Approx.)	Ø HW	Water Working Press. PSI	Hydrostatic Test Press. PSI
A	B	C	D	E	F	G	H	I	J	K	L								
18	21.50	1.58	Ø 25.00	8 x 1.13-7 UNS-2B T 1.50	8 x Ø 1.25 THRU	Ø 22.75	16.42	21.50	27.6	17.7	18.3	1270	IW6 AWWA-IP68	152:1	38	30.0	150 PSI	225 PSI	
20	23.50	1.69	Ø 27.50	8 x 1.13-7 UNS-2B T 1.25	12 x Ø 1.25 THRU	Ø 25.00	17.09	22.25	28.6	17.7	17.4	1545	IW6 AWWA-IP68	228:1	57				
24	42.00	1.88	Ø 32.00	8 x 1.25-7 UNS-2B T 2.00	12 x Ø 1.38 THRU	Ø 29.50	21.06	28.00	35.4	23.8	21.8	3429	IW7 AWWA-IP68	384:1	96				
30	51.00	2.13	Ø 38.75	8 x 1.25-7 UNS-2B T 2.63	20 x Ø 1.38 THRU	Ø 36.00	22.19	30.69	37.2	29.9	22.5	6145	IW9 AWWA-IP68	696:1	174				
36	60.00	2.38	Ø 46.00	8 x 1.50-6 UNS-2B T 3.50	24 x Ø 1.63 THRU	Ø 42.75	25.81	34.75	42.3	29.9	27.7	8532	IW9 AWWA-IP68	928:1	232	40.0			

**NOTE:**

- Interior and exterior ferrous metal surfaces epoxy coated to comply with the AWWA C550 Standard.
- Standard with handwheel on flanged valves.
- Only 30" and 36" valves have a bottom cover plate (see pentagon ballon items).
- Body castings are tri-marked with "Clow", "Kennedy", and "M&H".