



**MCWANE**  
PLANT & INDUSTRIAL

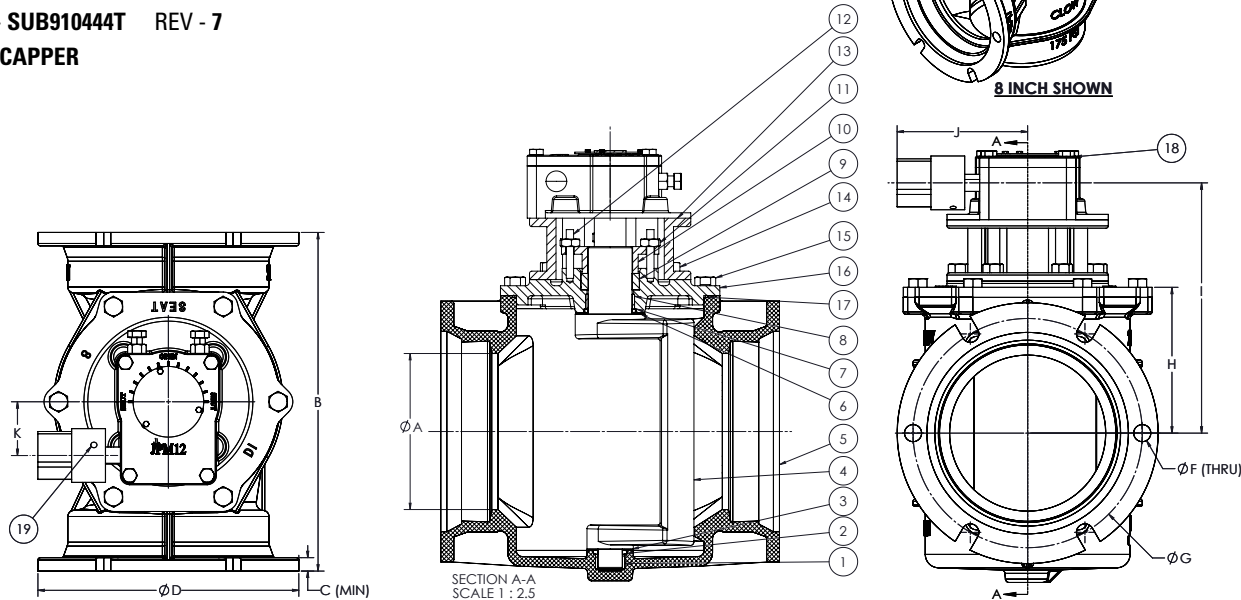


KENNEDY VALVE

**100% FULL FLOW  
ECCENTRIC PLUG VALVE  
WITH MECH. JOINT ENDS  
AND GEAR - OP NUT  
SIZES 3" - 16"**

DRAWING NO.- SUB910444T REV - 7

DRAWN BY - J CAPPER



DIMENSIONS													
A	B	C	D	F	G	H	I	J	K	Weight (lbs.)	JPM Gear	Gear Ratio	No. Turns to Open (Approx.)
3	11.50	.58	7.62	4 x .75 THRU	6.19	3.76	7.50	9.01	2.8	75 lbs.	JPM12B	40	10
4	14.25	.60	9.06	4 x .88 THRU	7.50	4.65	8.28	9.01	2.8	100 lbs.	JPM12B	40	10
6	15.75	.63	11.06	6 x .88 THRU	9.50	5.78	10.30	9.41	2.8	165 lbs.	JPM12FB	40	10
8	17.36	.66	13.39	6 x .88 THRU	11.75	7.48	12.54	9.41	2.8	230 lbs.	JPM12FB	40	10
10	19.37	.70	15.62	8 x .88 THRU	14.25	8.88	14.02	10.08	3.9	340 lbs.	JPM14B	53	13
12	20.75	.73	17.88	8 x .88 THRU	16.25	11.00	16.38	10.08	3.9	480 lbs.	JPM14B	53	13
14	24.50	.79	20.25	10 x .88 THRU	18.75	12.88	18.00	10.71	4.9	720 lbs.	JPM15B	68	17
16	27.25	.85	22.50	12 x .88 THRU	21.00	14.69	22.50	10.71	4.9	850 lbs.	JPM15B	68	17

SIZE RANGE	WATER WORKING PRESSURE PSI	HYDROSTATIC TEST PSI
3-12	175 PSI	262.5 PSI
14-16	150 PSI	225 PSI

ITEM	PART NAME	ASTM DESIGNATION	QTY
1	Lower Sleeve Bearing	Sintered Alloy SS316	1
2	Lower Grit Seal	NBR	1
3	Lower Thrust Washer	PTFE	1
4	Plug	ASTM A536 65-45-12 OR 70-50-05 +NBR	1
5	Body	ASTM A536 65-45-12 OR 70-50-05	1
6	Upper Thrust Washer	PTFE	1
7	Upper Grit Seal	NBR	1
8	Upper Sleeve Bearing	Sintered Alloy SS316	1
9	V-Packing	NBR	1
10	Follower Gland	ASTM A536 65-45-12 OR 70-50-05	1
11	Hex Nuts	Stainless Steel ASTM A276.T316	2
12	Studs	Stainless Steel ASTM A276.T316	2
13	Adapter	ASTM A536 65-45-12 OR 70-50-05	1
14	Adapter Bolts	Stainless Steel ASTM A276.T316	6
15	Cover Bolts	Stainless Steel ASTM A276.T316	4
16	Cover	ASTM A536 65-45-12 OR 70-50-05	1
17	Cover O-ring	NBR	1
18	JPM Gear w/ HW	-----	1
19	Slot Type Spring Pin	ASTM A29 1566	1

**NOTE:**

1. Body castings are tri-marked with "Clow", "Kennedy", and "M&H".