

1. FLOW MAY BE IN EITHER DIRECTION
2. VALVE SHAFT WILL MEET OR EXCEED AWWA C504 REQUIREMENTS
3. NUMBER OF TURNS TO CLOSE: 48
4. NUMBER OF BOLTS ON EACH FLANGE: 14
5. DIAMETER OF BOLTS: 3/4
6. INSIDE DIAMETER OF VALVE HUB: 21.74"
7. OPERATED BY 2" AWWA OPERATING NUT/WRENCH NUT
8. RATED AND TESTED FOR 150psi WORKING PRESSURE
9. GASKETS, GLANDS, AND BOLTS FOR MECHANICAL JOINT FURNISHED WITH VALVE SPECIFIED ON ORDER

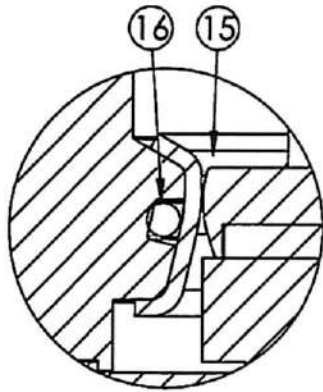
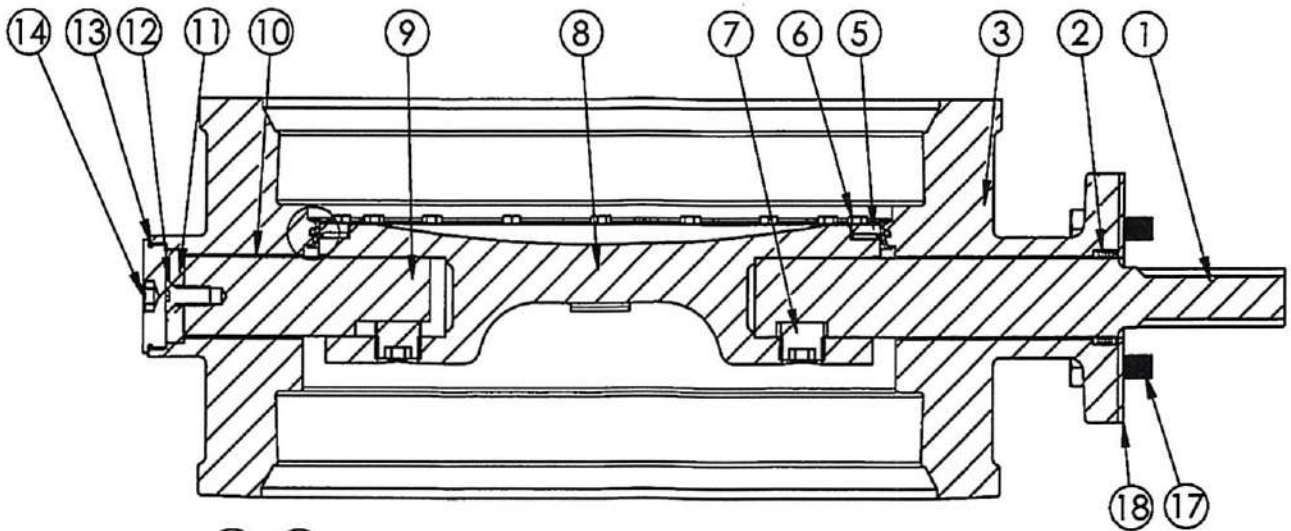
THIS DWG. AND ALL INFORMATION IS OUR PROPERTY AND SHALL NOT BE USED, COPIED, OR REPRODUCED WITHOUT WRITTEN CONSENT. DESIGN AND INVENTION RIGHTS RESERVED.



**KENNEDY VALVE**  
 Division of McWane, Inc.  
 1021 East Water St.  
 Elmira, NY 14901

**DRAWN:** CTJ  
**DATE:** 11/26/2018  
**DWG. NO.** B20MAM11

**20" - Style 4500 - CL150**  
**BFV with 1250 F/A16 MSS/ISO Connection-**  
**Mechanical Joint - Buried Operator**



**SEAT DETAIL**

| ITEM NO. | DESCRIPTION              | MATERIAL                            |
|----------|--------------------------|-------------------------------------|
| 1        | OPERATOR SHAFT           | 304 STAINLESS STEEL, ASTM A-276     |
| 2        | V-RING PACKING SET       | EPDM, BUNA-N                        |
| 3        | BFV BODY                 | DUCTILE IRON ASTM A-536             |
| 4        | UPPER JOURNAL BEARING    | FIBER & REINFORCED TEFLON           |
| 5        | VANE SEAT RING           | EPT W/ STAINLESS STEEL INSERT       |
| 6        | HEX HEAD CAP SCREW       | 18-8 STAINLESS STEEL W/ NYLOC PATCH |
| 7        | TORQUE PLUG              | 304 STAINLESS STEEL, ASTM A-276     |
| 8        | BFV VANE                 | DUCTILE IRON ASTM A-536             |
| 9        | THRUST SHAFT             | 304 STAINLESS STEEL, ASTM A-276     |
| 10       | LOWER JOURNAL BEARING    | FIBER & REINFORCED TEFLON           |
| 11       | THRUST BEARING           | BRONZE ALLOY                        |
| 12       | THRUST BEARING CAP SCREW | 18-8 STAINLESS STEEL                |
| 13       | BODY END PLUG O-RING     | BUNA-N                              |
| 14       | BODY END PLUG            | STEEL                               |
| 15       | BODY SEAT RING           | 316 STAINLESS STEEL                 |
| 16       | BODY SEAT O-RING         | BUNA-N                              |
| 17       | OPERATOR MOUNTING BOLTS  | 18-8 STAINLESS STEEL                |
| 18       | ISO FA16 SEAL PLATE      | COMMERCIAL STEEL                    |

THIS DWG. AND ALL INFORMATION IS OUR PROPERTY AND SHALL NOT BE USED, COPIED, OR REPRODUCED WITHOUT WRITTEN CONSENT. DESIGN AND INVENTION RIGHTS RESERVED.

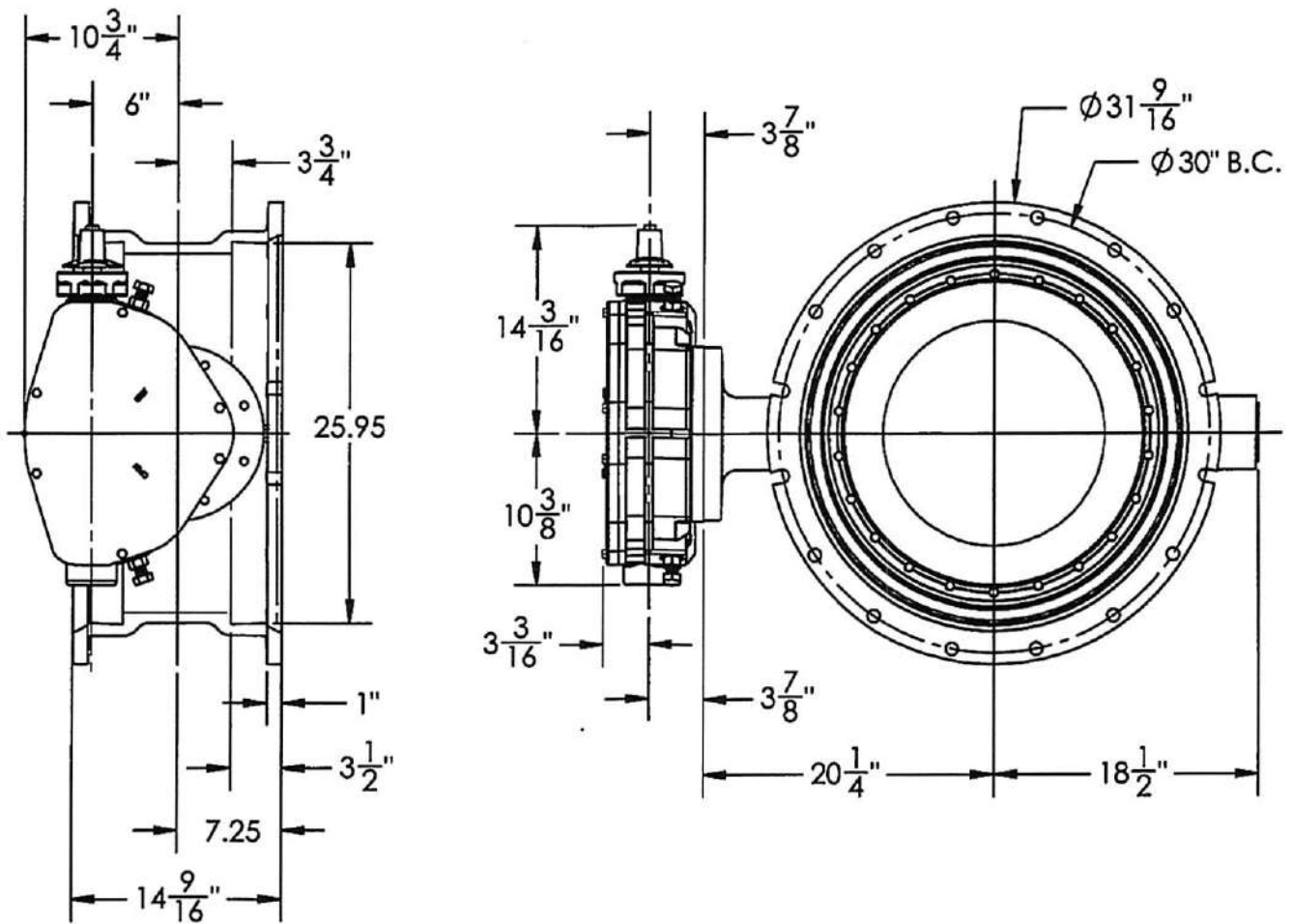


**KENNEDY VALVE**  
 Division of McWane, Inc.  
 1021 East Water St.  
 Elmira, NY 14901

**DRAWN:** ZF  
**DATE:** 9/27/2018  
**DWG. NO.:** B20MBB11

20" AWWA C504 - STYLE 4500 - CL150  
 BFV w/ F/A16 MSS/ISO CONNECTION  
 SUB-ASSEMBLY - MATERIAL LIST  
 MECHANICAL JOINT ENDS





1. FLOW MAY BE IN EITHER DIRECTION
2. 72 TURNS TO CLOSE
3. VALVE SHAFT WILL MEET OR EXCEED AWWA C504 REQUIREMENTS
4. NUMBER OF TURNS TO CLOSE
5. (16)  $\frac{3}{4}$ " BOLTS ON EACH FLANGE
6. OPERATED BY 2" AWWA OPERATING NUT / WRENCH NUT
7. RATED AND TESTED FOR 150psi WORKING PRESSURE
8. GASKETS, GLANDS, AND BOLTS FOR MECHANICAL JOINT FURNISHED WITH VALVE WHEN SPECIFIED ON ORDERS
9. VALVE WEIGHT IS 800 LBS.

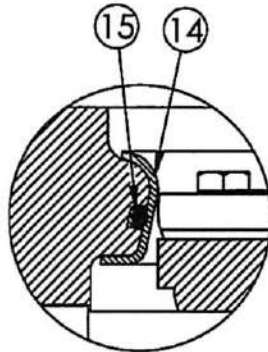
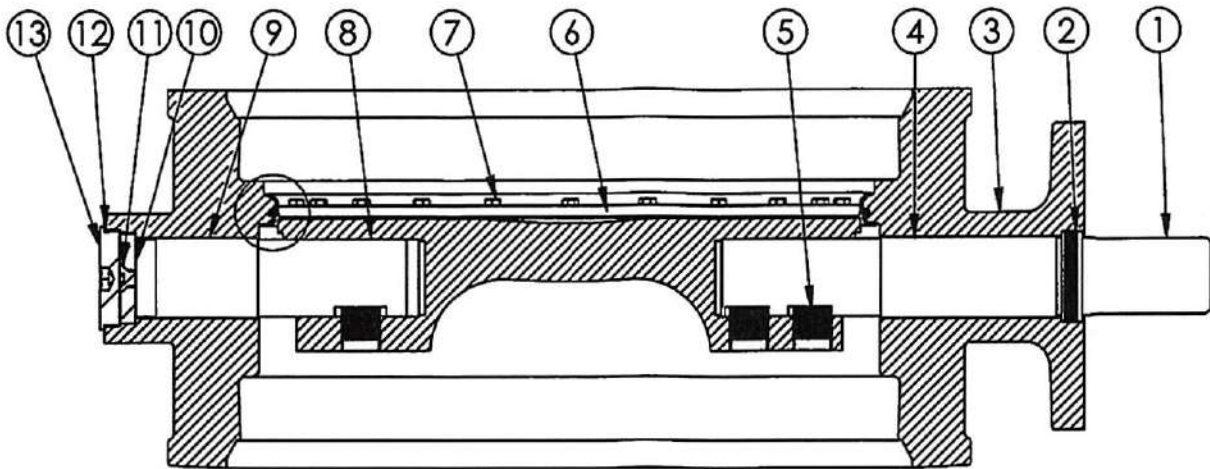
THIS DWG. AND ALL INFORMATION IS OUR PROPERTY AND SHALL NOT BE USED, COPIED, OR REPRODUCED WITHOUT WRITTEN CONSENT. DESIGN AND INVENTION RIGHTS RESERVED.



**KENNEDY VALVE**  
 Division of McWane, Inc.  
 1021 East Water St.  
 Elmira, NY 14901

**DRAWN:** CTJ  
**DATE:** 11/26/2018  
**DWG. NO.**  
 B24MAM11

24" AWWA C504 - STYLE 4500 - CL150  
 BFV w/ F/A25 MSS/ISO CONNECTION  
 SUB-ASSEMBLY - DIMENSIONS  
 MECHANICAL JOINT



**SEAT DETAIL**

| ITEM NO. | DESCRIPTION              | MATERIAL                            |
|----------|--------------------------|-------------------------------------|
| 1        | OPERATOR SHAFT           | 304 STAINLESS STEEL, ASTM A-276     |
| 2        | V-RING PACKING SET       | EPDM, BUNA-N                        |
| 3        | BFV BODY                 | DUCTILE IRON ASTM A-536             |
| 4        | UPPER JOURNAL BEARING    | FIBER & REINFORCED TEFLON           |
| 5        | TORQUE PLUG              | 304 STAINLESS STEEL, ASTM A-276     |
| 6        | VANE SEAT RING           | EPT W/ STAINLESS STEEL INSERT       |
| 7        | HEX HEAD CAP SCREW       | 18-8 STAINLESS STEEL W/ NYLOC PATCH |
| 8        | THRUST SHAFT             | 304 STAINLESS STEEL, ASTM A-276     |
| 9        | LOWER JOURNAL BEARING    | FIBER & REINFORCED TEFLON           |
| 10       | THRUST BEARING           | BRONZE ALLOY                        |
| 11       | THRUST BEARING CAP SCREW | 18-8 STAINLESS STEEL                |
| 12       | BODY END PLUG O-RING     | EPDM                                |
| 13       | BODY END PLUG            | STEEL                               |
| 14       | BODY SEAT RING           | 316 STAINLESS STEEL                 |
| 15       | BODY SEAT O-RING         | BUNA-N                              |

THIS DWG. AND ALL INFORMATION IS OUR PROPERTY AND SHALL NOT BE USED, COPIED, OR REPRODUCED WITHOUT WRITTEN CONSENT. DESIGN AND INVENTION RIGHTS RESERVED.



**KENNEDY VALVE**  
 Division of McWane, Inc.  
 1021 East Water St.  
 Elmira, NY 14901

**DRAWN:** ZF  
**DATE:** 6/28/18  
**DWG. NO.**  
 BMJ-15-45-24-ISO

24" AWWA C504 - STYLE 4500 - CL150  
 BFV w/ F/A25 MSS/ISO CONNECTION  
 SUB-ASSEMBLY - MATERIAL LIST  
 MECHANICAL JOINT